



# 18V CORDLESS SPRAY GUN

OPERATING MANUAL

SG-L0118

Your chemical sprayer has been engineered and manufactured to our high standard for dependability, ease of operation, and operator safety. When properly cared for, it will give you years of rugged, trouble-free performance.



**WARNING:** To reduce the risk of injury, the user must read and understand the operator's before manual using this product.

## PRODUCT SPECIFICATION

<b>Voltage:</b>	18V DC
<b>Tank Capacity:</b>	900ml
<b>Max Water Flow Rate:</b>	700ml/min
<b>Rated Power:</b>	243W
<b>Weight:</b>	1.45kg

## GENERAL POWER TOOL SAFETY WARNINGS

Read all safety warnings and instructions. Failure to heed warnings and follow instructions may result in electric shock, fire and/or serious injury.

Keep safety warnings and instructions for future reference.

The term "power tool" in the safety warnings refers to your mains operated (corded) power tool or battery-operated (cordless) power tool.

### BEFORE USE

Remove any packing material and loose parts from unit.

Check the accessories before use. It should be fit with the machine and your purpose.

If the machine is new, the battery must first be charged.

Attention! After long time storage, the battery capacity will be reduce.

A new battery or one which has not been used for an extended period achieves full performance only after charging and discharging cycles. A substantial drop in operating period per charge indicates that the battery is worn out and must be replaced.

### WORKING AREA

- Keep work area clean and well lit. Cluttered and dark areas invite accidents.
- Do not operate power tools in explosive atmospheres, such as in the presence of flammable liquids, gases or dust. Power tools create sparks which may ignite the dust or fumes.
- Keep children and bystanders away while operating a power tool.

Distractions can cause you to lose control.

## **ELECTRICAL SAFETY**

- Always check that the power supply corresponds to the voltage on the rating plate.
- Power tool plugs must match the outlet. Never modify the plug in any way. Do not use adapter plugs with earthed power tools. Unmodified plugs and matching outlets will reduce the risk of an electric shock.
- Avoid body contact with earthed surfaces such as pipes, radiators, kitchen ranges and refrigerators. There is an increased risk of an electric shock if your body is earthed.
- Do not expose power tools to rain or wet conditions. If water gets inside a power tool, it will increase the risk of an electric shock.
- Do not damage the cord. Never use the cord for carrying, pulling or unplugging the power tool. Keep the cord away from heat, oil, sharp edges or moving parts. Damaged or entangled cords increase the risk of an electric shock.
- When operating a power tool outdoors, use an extension cable suitable for outdoor use. Using a cord suitable for outdoor use reduces the risk of an electric shock.
- If operating a power tool in a damp location is unavoidable, use a power supply protected by a residual current device (RCD). Using an RCD reduces the risk of an electric shock.

## **PERSONAL SAFETY**

- Stay alert, watch what you are doing and use common sense when operating a power tool. Do not use a power tool when you are tired or under the influence of drugs, alcohol or medication. A moment of inattention when operating a power tool may result in serious personal injury.
- Use safety equipment. Always wear eye protection. Using safety equipment such as a dust mask, non-skid safety shoes, a hard hat, or hearing protection whenever it is needed will reduce the risk of personal injury.
- Avoid accidental starts. Ensure the switch is in the off position before inserting the plug. Carrying power tools with your finger on the switch or plugging in power tools when the switch is in the on position makes accidents more likely.
- Remove any adjusting keys or spanners before turning on the power tool. A spanner or key left attached to a rotating part of the power tool may result in personal injury.
- Do not reach out too far. Keep your feet firmly on the ground at all times. This will enable you retain control over the power tool in unexpected situations.
- Dress properly. Do not wear loose clothing or jewellery. Keep your hair, clothing and gloves away from the power tool. Loose clothes, jewellery or long hair can become entangled in the moving parts..
- If there are devices for connecting dust extraction and collection facilities, please ensure that they are attached and used correctly. Using such devices can reduce dust-related hazards.

## **POWER TOOL USE AND CARE**

- Do not expect the power tool to do more than it can. Use the correct power tool for what you want to do. A power tool will achieve better results and be safer if used in the context for which it was designed.
- Do not use the power tool if the switch cannot turn it on and off. A power tool with a broken switch is dangerous and must be repaired.
- Disconnect the plug from the power source before making adjustments, changing accessories, or storing power tools. Such preventive safety measures reduce the risk of starting the power tool accidentally.
- Store power tools, when not in use, out of the reach of children and do not allow people who are not familiar with the power tool or these instructions to operate it. Power tools are potentially dangerous in the hands of untrained users.
- Maintain power tools. Check for misalignment or jammed moving parts, breakages or any other feature that might affect the operation of the power tool. If it is damaged, the power tool must be repaired. Many accidents are caused by using poorly maintained power tools.
- Keep cutting tools sharp and clean. Properly maintained cutting tools with sharp cutting edges are less likely to jam and are easier to control.
- Use the power tool, accessories and cutting tools, etc., in accordance with these instructions and in the manner intended for the particular type of power tool, taking into account the working conditions and the work which needs to be done. Using a power tool in ways for which it was not intended can lead to potentially hazardous situations.

## SERVICE

Your power tool should be serviced by a qualified specialist using only standard spare parts. This will ensure that it meets the required safety standards.

- a) Use only the manufacturer's recommended replacement parts and accessories.
- b) Inspect and maintain the machine regularly. Have the machine repaired only by an authorized repairer.
- c) When not in use, store the machine out of the reach of children.

## ADDITIONAL SAFETY INSTRUCTIONS FOR BATTERIES AND CHARGERS



*Use only batteries and chargers applicable for this machine.*

## BATTERIES

- Never attempt to open for any reason.
- Do not store in locations where the temperature may exceed 40 °C.
- Charge only at ambient temperatures between 4 °C and 40 °C.
- When disposing of batteries, follow the instructions given in the section "Protecting the environment".
- Do not cause short circuits. If connection is made between the positive (+) and negative (-) terminal directly or via accidental contact with metallic objects, the battery is short circuited and an intense current will flow causing heat generation which may lead to casing rupture or fire.

- Do not heat. If batteries are heated to above 100 °C, sealing and insulating separators and other polymer components may be damaged resulting in electrolyte leakage and/or internal short circuiting leading to heat generation causing rupture or fire. Moreover do not dispose of the batteries in fire, explosion and/or intense burning may result.
- Under extreme conditions, battery leakage may occur. When you notice liquid on the battery, proceed as follows:
- Carefully wipe the liquid off using a cloth. Avoid skin contact.
- In case of skin or eye contact, follow the instructions below:
  1. Immediately rinse with water. Neutralize with a mild acid such as lemon juice or vinegar.
  2. In case of eye contact, rinse abundantly with clean water for at least 10 minutes.
  3. Consult a physician.

*Fire hazard! Avoid short-circuiting the contacts of a detached battery. Do not incinerate the battery.*

## CHARGERS

- Never attempt to charge non-rechargeable batteries.
- Have defective cords replaced immediately.
- Do not expose to water.
- Do not open the charger.
- Do not probe the charger.
- The charger is intended for indoor use only.

## SYMBOLS

In this manual and/or on the machine the following symbols are used:



Denotes risk of personal injury or damage to the tool.



Read manual before use



Wear eye protection



Wear ear protection



Wear safety gloves



In accordance with essential requirements of the European directive(s)



Class II - The machine is double insulated; Earthing wire is therefore not necessary (only for charger)



Ambient temperature 40°C max. (only for battery)



Do not expose charger and battery pack to water



Use battery and charger only in closed rooms



Do not incinerate battery pack or charger



Protect from the rain.

## OPERATION

Before using the equipment:

### BATTERY CHARGER

The lithium-ion battery can be charged at any time and will not develop a "memory" when charged after only a partial discharge. It is not necessary to run down the battery pack charge before recharging. Remove the battery pack from the tool when convenient for you and your job. You can "top-off" your battery pack's charge before starting a big job or long period of use.

Due to lithium-ion's fade-free properties, the only time it is necessary to charge the lithium-ion battery pack is when the pack has reached the end of its charge. To signal the end of charge, power to the tool will drop quickly. Charge the battery pack as needed.

### CHARGING THE BATTERY

This lithium-ion battery pack is shipped partially charged. Before using it the first time, fully charge the battery pack. A fully discharged battery pack with a temperature between 0°C and 40°C will charge in about 1 hour.

Plug the charger adapter into power source. The green light on the charger stand will illuminate, indicating the charger is powered.

Slide the battery all the way into the charger stand. The red light on the charger stand will illuminate, indicating that the battery is charging.

The red light will go off after charging is complete and a green light will appear.



**NOTE:** Batteries may become warm while charging. This is normal. If the battery is hot after continuous use in the tool, allow it to cool down to room temperature before charging. This will extend the life of your batteries.



**WARNING:** Always disconnect the battery pack from the tool before any assembly, adjustments or changing accessories.

## INSERTION AND REMOVAL OF RECHARGEABLE BATTERY

Depress the battery-release button located on the front of the battery pack to release battery pack.

Pull the battery pack out and remove it from the tool.

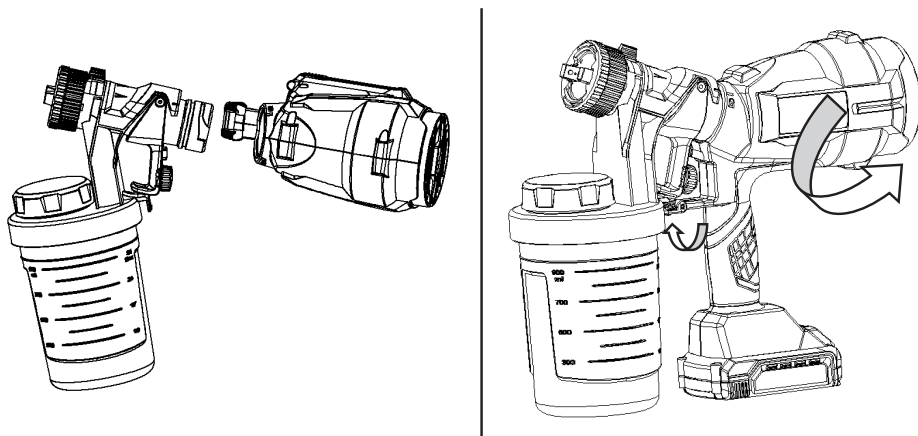
**WARNING:** Always remove the battery pack before making adjustments to the equipment.

Be sure to read the following information before you put the cordless equipment into operation:

Charge the battery pack with the charger. An empty battery pack requires a charging period of approximately 0.5 to 1 hour.

## ASSEMBLY OF MAIN UNIT

1. Insert the fan assembly into spray part from unlock position to the end, then rotate fan assembly to lock position.
2. Lock the tank to lock position. As shown below:



## SPRAYING MATERIAL PREPARATION

Before spraying, the spray material is diluted with the solvent specified by the material manufacturer. Do not use spray material that exceeds the specified maximum viscosity.

Note: Do not use flammable spraying liquids!

Follow the below instructions:

1. Thoroughly mix the spray material before checking the viscosity.
2. Completely immerse the viscosity cup into the spray material except for the hook part.
3. Lift the viscosity cup hook and record the time: in seconds, until the liquid in the viscous cup has flowed. This dripping times are recommended by materials' manufacturers.
4. The spray materials need to be filtered with a wire mesh before spraying to prevent the large particle contaminants to clogging the nozzle.

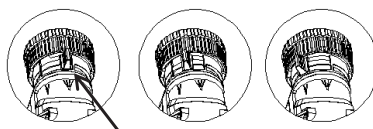


## FILLING THE SPRAYING MATERIAL

1. Remove the tank from appliance
2. Pour the diluted filtered spraying material into the tank. The liquid level does not exceed the bottleneck of the tank.
3. Carefully screw back the liquid-filled tank onto the gun and tighten.

## SPRAYING

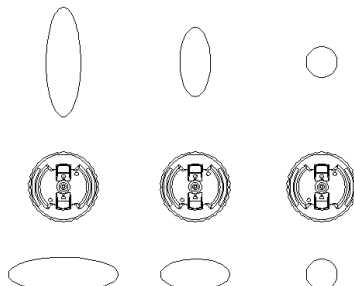
1. By turning the nozzle adjusting nut in various positions, the gun offers three types of spraying methods: round, horizontal flat round, vertical flat round. Users can adjust accordingly to achieve the ideal spraying results.
2. Users can adjust the spraying size and shape by adjusting the air flow regulator. As shown to the right.



*Note: When adjusting the trigger must be released to avoid danger! Never direct the nozzle to people and animals!*

## ADJUSTING FLOW RATE

The flow rate of spray can be adjusted by turning the knob behind the trigger. The larger the discharge opening, the larger the spray flow rate.





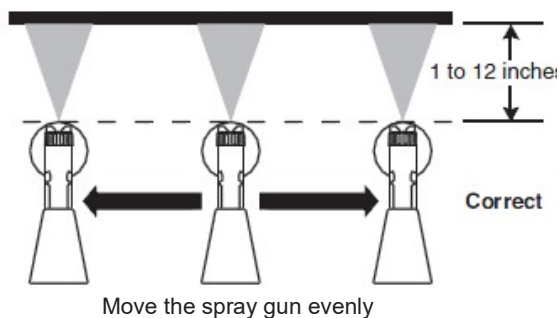
The HVLP spray gun (Low Pressure and High Flow) is a brand new spray system for users. Before first spraying, the user must do some exercises on the discarded wood or cardboard to conform.

## PRE-TREAT THE SURFACE TO BE SPRAYED

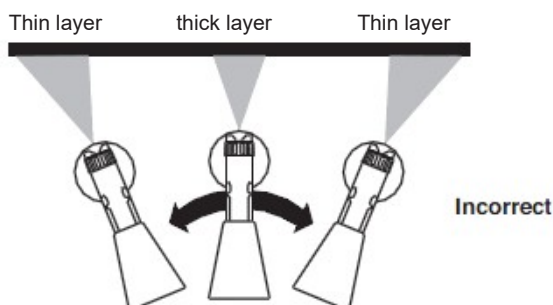
The splash result depends on how smooth and clean the surface is before spraying. Therefore, pre-treat the surface carefully and keep it dust-free. Cover non-spraying areas.

## CORRECT SPRAYING METHOD

- The spray gun be perpendicular to surface when spraying. Users can choose a distance of nozzle to surface 5-30cm depending on the size of the spray pattern. In general, the larger the distance, the larger the spray pattern.
- Move the spray gun evenly parallel along the surface. A uniform spray gun guidance results in a uniform surface quality.
- Generally, spray twice, the first spraying may be slightly thinner, and the second spraying should be slightly thicker.
- At the end of spraying, hold the spray gun near the surface to avoid over spray.



- Pull the trigger while spraying, and release the trigger when spraying is finished. When spraying the next layer, align the nozzle with the bottom edge of the previous sprayed and allow the edges to overlap slightly for better spray.



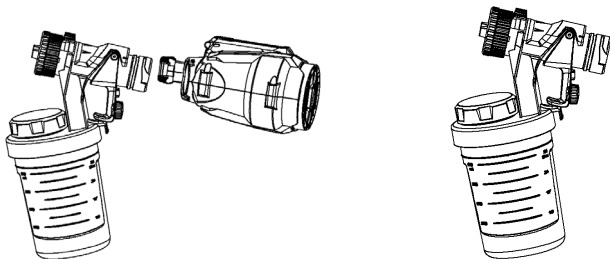
- Do not move the spray gun unevenly as shown above.

## CLEANING AND MAINTENANCE

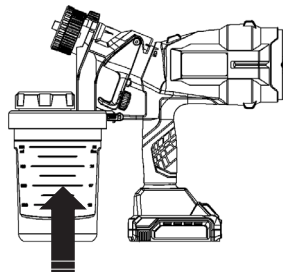
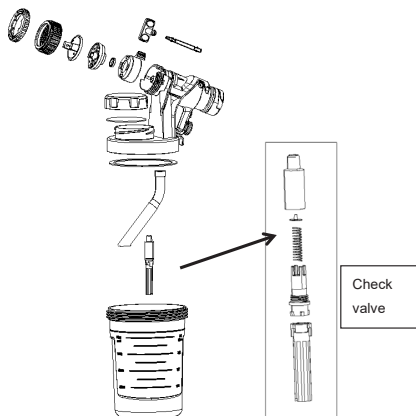


*Note: Do not immerse the gun in the detergent!*

1. Unlock the fan assembly and remove it from the gun assembly. Align the release latch and pull out the gun. Press the trigger so that the spray material remaining in the gun flows into the container.



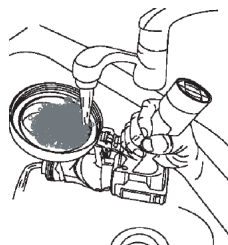
2. Unlock and remove the tank, empty the residual spraying material in the tank.
3. For cleaning, pour a little cleaning solution into the tank. After washing, the residual liquid should be properly disposed to avoid environmental pollution.
4. Refill new cleaning solution.
5. Screw back the tank with the cleaning solution onto the spray gun.
6. Spray cleaning solution for a few seconds (2-5s) in safety area, spray for a few seconds again. Then remove the tank and press the trigger.
7. Wipe and clean the outside of the tank.
8. Remove the adjusting knob, nut, Nozzle guard, nozzle, etc.



9. Clean the tank, nozzle guard, nut, nozzle, air flow regulator, gun assembly, etc with a brush and cleaning solution.



*Note: Never use sharp metal needle or similar to clean the nozzles! Never use silicone-containing solvent or lubricant to clean the nozzles! Do not miss the nozzle seal.*



10. Install the removed parts.
11. When battery pack is not in use for long time, it should be stored it separately.

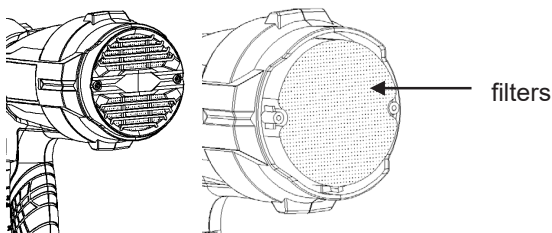
## MAINTENANCE

After using for a period of time, you should check if the filter is dirty or not. If it is too dirty, you need to replace the filter with the following steps.

1. Remove the battery pack, and the filter guard by screwdriver.
2. Remove the dirty filter and replace it with a new one.
3. Reinstall the filter guard.

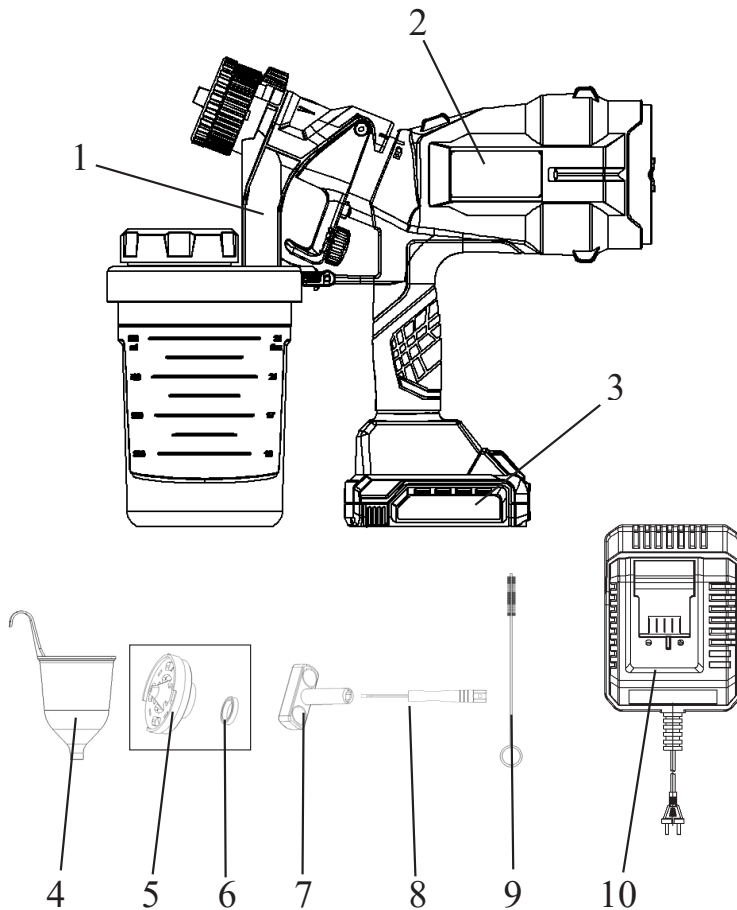


*Never operate the spray gun without a filter! The dirt will be sucked into the appliance and cause a damage.*



## STORING

Store the machine, operating instructions and where necessary the accessories in the original packaging in a dry place. In this way you will always have all the information and parts ready to hand.



## PARTS LIST

NO	PART DESCRIPTION	QTY	NO	PART DESCRIPTION	QTY
1	Gun assembly	1	6	Seal ring	1
2	Fan assembly	1	7	Wrench	1
3	Battery (sold separately)	1	8	Special needle for unclogging the nozzle	1
4	Viscosity cup	1	9	Brush	1
5	Nozzle	1	10	Charger (sold separately)	1