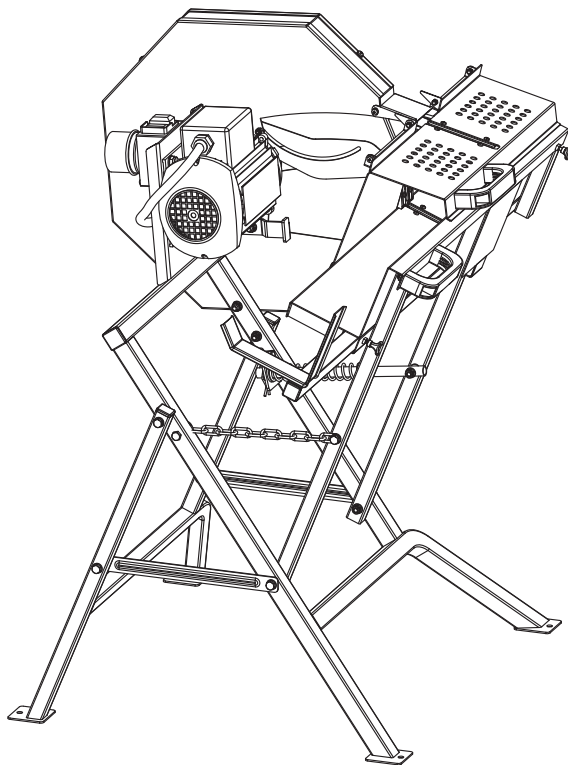




Save This Manual for Future Reference

Original Instruction



Log Saw

Operator's Manual

MODEL NUMBER : ☐ 65651

SERIAL NUMBER :

Both model number and serial number may be found on the main label. You should record both of them in a safe place for future use.

FOR YOUR SAFETY

**READ AND UNDERSTAND THE ENTIRE MANUAL BEFORE
OPERATING MACHINE**

TABLE OF CONTENTS

Introduction	2
Specifications	2
Symbols	3
Safety	4
Contents Supplied	6
Assembly	7
Know your Machine	11
Features & Controls	11
Operation	12
Maintenance	13
Storage	14
Wiring Diagram	15
Trouble Shooting	15
Parts Schedule	16

INTRODUCTION

Your new Log saw will more than satisfy your expectations. It has been manufactured under stringent quality standards to meet superior performance criteria. You will find it easy and safe to operate, and with proper care, it will give you many years of dependable service.



Carefully read through this entire operator's manual before using your new Log saw. Take special care to heed the cautions and warnings.

APPLICATION CONDITIONS

This log saw is designed for operating under ambient temperatures between +5°C and 40°C and for installation at altitudes no more than 1000m above M.S.L. The surrounding humidity should be less than 50% at 40°C. It can be stored or transported under ambient temperatures between -25°C and 55°C.

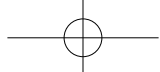
Specifications

Model Number	65651
AC Motor	230VAC 50Hz
Power P	2200W S2 15min*
Short-circuit Rating:	1 kA
Protection Category	IP 54
Blade Size	Ø 405 × Ø 30 mm
Number of Saw Teeth	32
Cutting Capacity	Diameter 140 mm Length 300-1000 mm
Blade Speed	2800 / min
Weight	36.3 kg

Sound emission level (LpA)	96 db(A) k=4 db(A)
Sound pressure level (LpA)	101 db(A) k=4 db(A)
Sound power level (LwA)	115 db(A) k=4 db(A)

* S2 15 minutes, Short-time duty. After continuous operation of 15 minutes the drill stops until the device temperature deviates by less than 2 K (2°C) from the room temperature.

The figures quoted are emission levels and are not necessarily safe working levels. Whilst there is a correlation between the emission and exposure levels, this cannot be used reliably to determine whether or not further precautions are required. Factors that influence the actual level of exposure of the workforce include the characteristics of the work room, the other sources of noise etc. i.e. the number of machines and other adjacent processes. Also the permissible exposure level can vary from country to country. This information, however, will enable the user of the machine to make a better evaluation of the hazard and risk.



Electrical Requirements

Connect the main leads to a standard 230V±10% (50Hz±1Hz) electrical supply which has protection devices of under-voltage, over-voltage, over-current as well as a residual current device (RCD) which maximum residual current rated at 0.03A.

RECYCLING AND DISPOSAL



This marking indicates that this product should not be disposed with other household wastes. To prevent possible harm to the environment or human health from uncontrolled waste disposal, recycle it responsibly to promote the sustainable reuse of material resources. To return your used device, please use the return and collection systems or check with your local authority or local stores for advice of environmental safe recycling.

SYMBOLS

The rating plate on your machine may show symbols. These represent important information about the product or instructions on its use.



Read these instructions for use carefully.



Caution! Wear ear-muffs. The impact of noise can cause damage to hearing.



Caution! Wear safety goggles. Sparks generated during working or splinters, chips and dust emitted by the device can cause loss of sight.

Wear protective gloves.



Wear safety footwear.



Wear appropriate clothing.



Caution! Wear a breathing mask.

Dust which is injurious to health can be generated when working on wood and other materials. Never use the device to work on any materials containing asbestos!



It is forbidden to remove or tamper with the protection devices and safety devices.



Caution! Risk of injury! Failure to keep your hands away from the blade will result in serious personal injury.



Disconnect the mains plug prior to the repair, cleaning, and maintenance of the splitter!



Keep children and bystanders off and away.

GB

Understand Your Log Saw

Read and understand the owner's manual and labels affixed to the log saw. Learn its application and limitations as well as the specific potential hazards peculiar to it.

Drugs, Alcohol and Medications

Do not operate the log saw while under the influence of drugs, alcohol, or any medication that could affect your ability to use it properly.

Avoid Dangerous Conditions

Always operate your log saw on dry, solid, level ground. Never operate your log saw on slippery, wet, muddy, or icy surfaces. The location you choose should be free from any tall grass, brush, or other interferences. There should be plenty of room for handling, and help the operator stay alert. Keep your work area clean and well lighted. Cluttered areas invite injuries. To avoid tripping, do not leave tools, logs, or other components laying around the work area. Do not use the log saw in wet or damp areas or expose it to rain. Do not use it in areas where fumes from paint, solvents or flammable liquids pose a potential hazard.

Inspect Your Saw

Check your log saw before turning it on. Keep guards in place and in working order. Use correctly sharpened saw blades. Make sure only saw blades made in conformity to EN847-1:2005 shall be used on the machine. Form a habit of checking to see that keys and adjusting wrenches are removed from tool area before turning it on. Replace damaged, missing or failed parts before using it. Make sure all nuts, bolts, screws, etc. are securely tightened. Never operate your log saw when it is in need of repair or is in poor mechanical

condition.

Dress Properly

Do not wear loose clothing, gloves, neckties or jewelry (rings, wrist watches). They can be caught in moving parts. Protective electrically non-conductive gloves and non-skid footwear are recommended when working. Wear protective hair covering to contain long hair, preventing it from getting caught in machinery.

Protect Your Eyes and Face

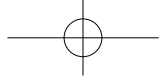
Any log saw may throw foreign objects into the eyes. This can cause permanent eye damage. Always wear safety goggles. Every day eyeglasses have only impact resistant lenses. They are not safety glasses. Also use face or dust mask if cutting operation is dusty.

Extension Cords

Improper use of extension cords may cause inefficient operation of the log saw which can result in overheating. Be sure the extension cord is no longer than 10m and its section is no less than 2.5mm² to allow sufficient current flow to the motor. Avoid use of free and inadequately insulated connections. Connections must be made with protected material suitable for outdoor use.

Avoid Direct and Indirect Electrical Shock

Check that the electric circuit is adequately protected and that it corresponds with the power, voltage and frequency of the motor. Check that there is a ground connection, and a regulation differential switch upstream. Ground the log saw. Prevent body contact with grounded surfaces: pipes, radiators, ranges, and refrigerator enclosures. Never open the switch / plug box. Should this be necessary, contact a qualified electrician. Make sure your fingers do not touch the plug's metal prongs when plugging or unplugging the log saw.



Keep Bystanders Away

Allow only one person to load and operate the log saw. Always keep bystanders, including visitors, children and pets away from the work area, especially when the log saw is under operations. Only the operator should stand near the machine and only within the safe operating area prescribed in this manual. Never use another people to help you with freeing jammed log. No one under the age of 16 should be allowed to operate the log saw. Any individual under the age of 18 should has the necessary training, skills to perform the functions properly and safely and should always be under the supervision of adult.

Inspect Your Log

Never attempt to cut logs containing nails, wire or debris. Branches must be cut of flush with the trunk.

Don't Overreach

Keep proper footing and balance at all times. Never stand on log saw. Serious injury could occur if the tool is tipped or if the cutting tools is unintentionally contacted. Do not store anything above or near the log saw where anyone might stand on the tool to reach them.

Avoid Injury From Unexpected Accident

Do not attempt to load or unload logs until the log saw has stopped. To refrain from removing any off-cut or other part of the workpiece from the cutting area whilst the machine is running except by using a push stick. Keep hands out of the way of all moving parts. Never use a damaged saw blade or that has been dropped. Do not reach around the saw blade with either hand while the cutter is running. Do not stand or have any part of your body in line with the path of the saw blade. Avoid awkward cutting operations and hand positions where a sudden slip could cause your hand to move

into the saw blade. Never plie logs to be split in a manner that will cause you to reach across the log saw. Only use your hand to operate the control handle. Never use your foot, knee, or any other extension device. Never attempt to free a stalled saw blade without first turning the log saw off.

Don't Force Tool

It will do a better and safer job at its design rate. Don't use log saw for a purpose for which it was not intended. Do not, under any circumstances, alter your log saw. This equipment was designed and engineered to be used in accordance with the operating instructions. Altering the equipment, or using the equipment in such a way as to circumvent its design capabilities and capacities, could result in serious or fatal injury and will void the warranty. Never try to cut logs larger than those indicated in the specifications table. This could be dangerous and may damage the machine.

Never Leave Tool Running Unattended

Don't leave tool until it has come to a complete stop.

Disconnect Power

Unplug when not in use, before making adjustments, changing parts, cleaning, or working on the log saw. Consult technical manual before servicing.

Maintain Your Log Saw With Care

Always clean the unit after each use. Keep the log saw clean for best and safest performance. Follow instructions for lubricating. Controls handles and power switch must be kept clean, dry and free from oil and grease at all times.

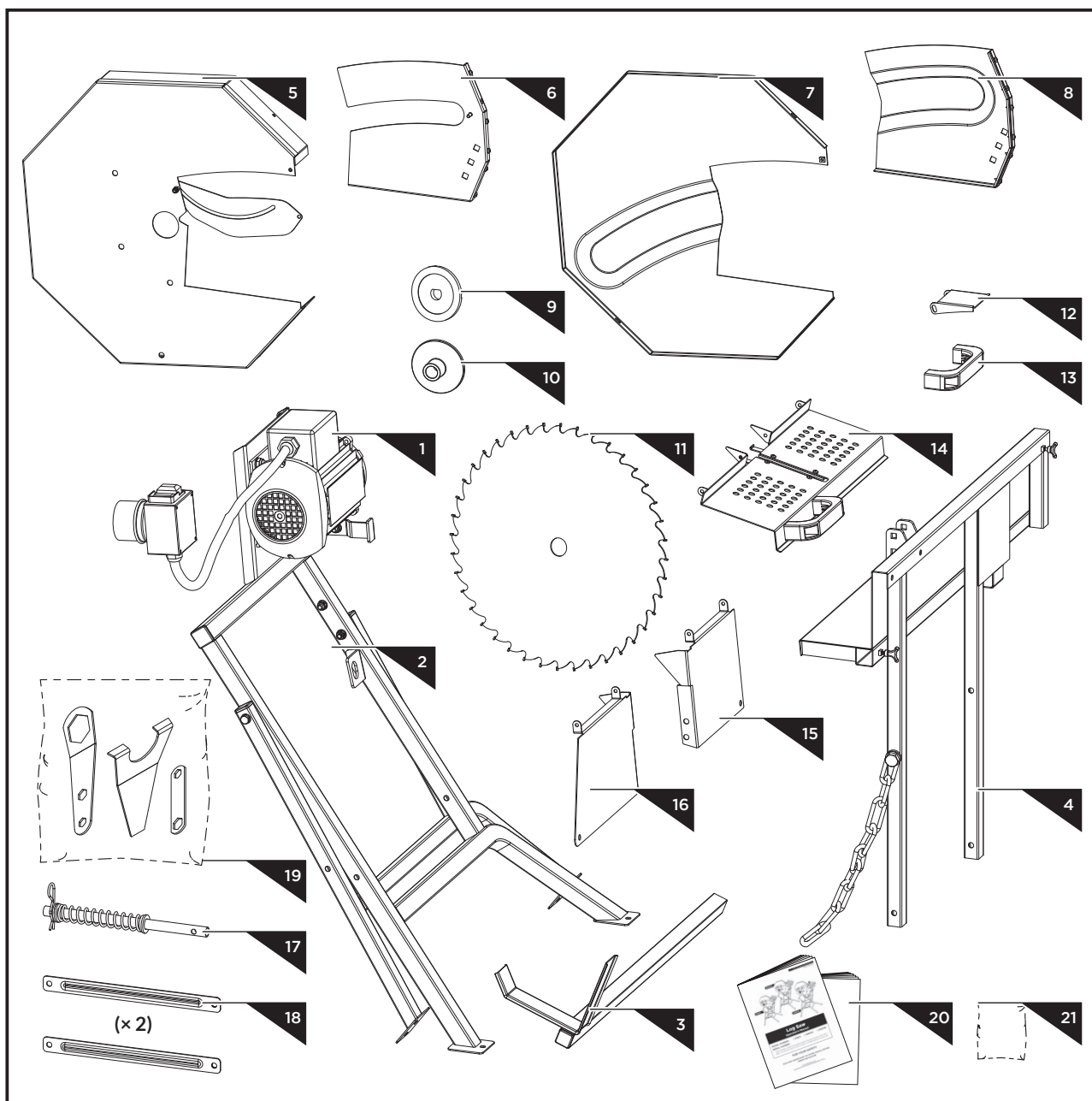
Make The Workshop Childproof

Lock the shop. Store the log saw away from children and others not qualified to use it.

GB

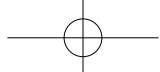
CONTENTS SUPPLIED

The log saw comes partially assembled and is shipped in carefully packed carton. After all the parts have been removed from the carton, you should have:

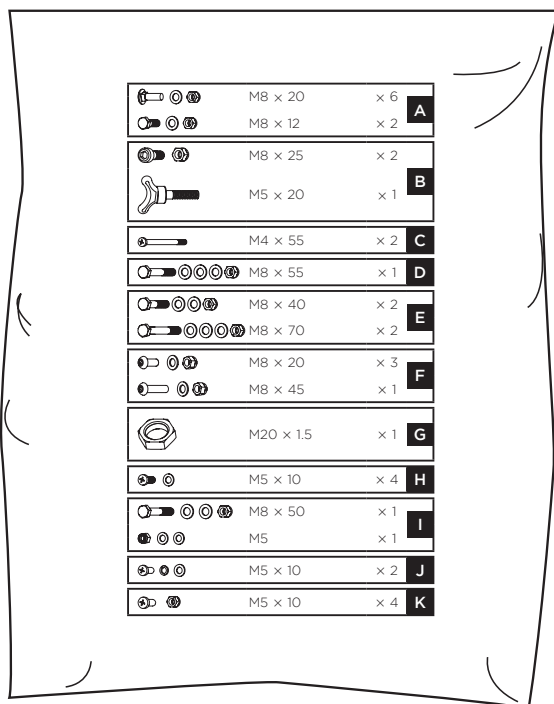


1. Motor
2. Base Frame
3. Log Carriage Extension
4. Pivoting Log Carriage
5. Inner Saw Blade Cover
6. Saw Blade Guard 2
7. Outer Saw Blade Cover

8. Saw Blade Guard 1
9. Front Clamping Flange
10. Rear Saw Blade Flange
11. Saw Blade
12. Limit Plate
13. Handle
14. Top Guard



15. Back Plate 1
16. Back Plate 2
17. Guide Pipe with Return Spring
18. Cross Brace (x 2)
19. Saw Blade Wrench & Face Wrench & Spanner
20. Operator's Manual
21. Hardware Bag, Including



ASSEMBLY

This log saw was partially assembled at the factory. To assemble your machine follow the below instructions.

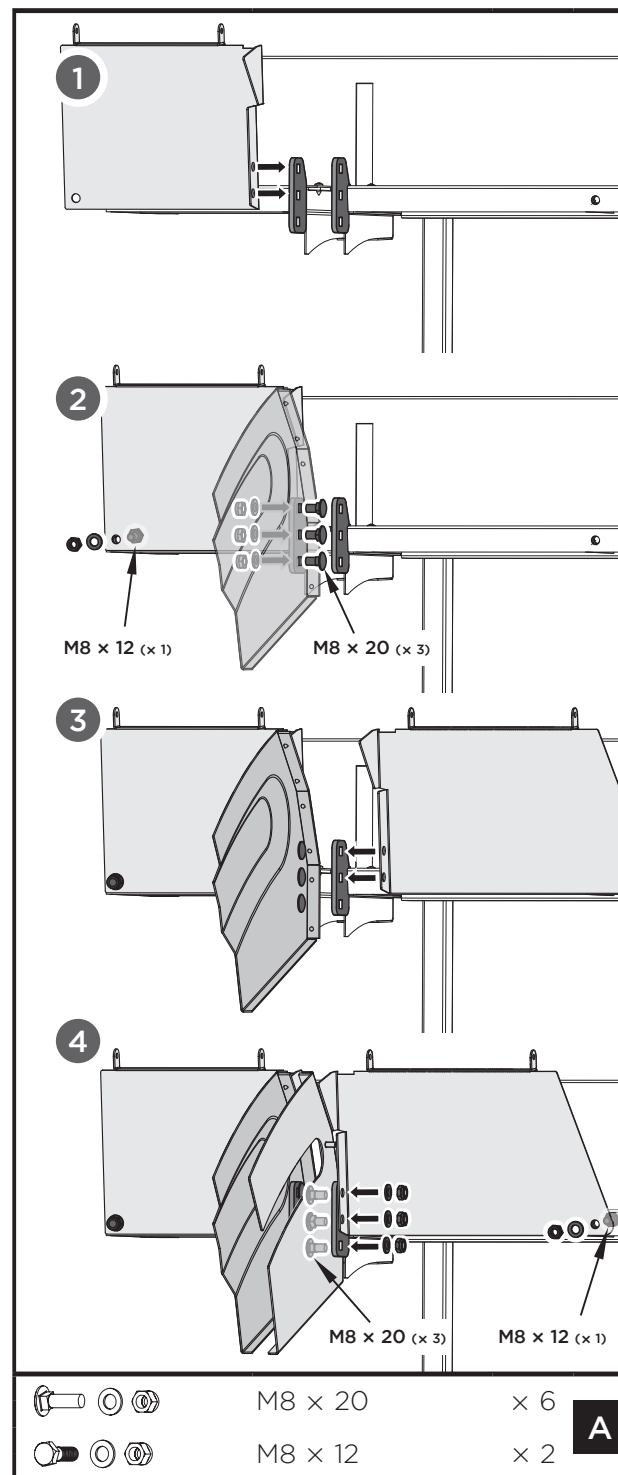
Saw Blade Guards

Place back plate 1 against outside of the connecting part at the log carriage and align its two holes with the upper two holes of the connecting part as Fig. A, illustration 1.

Fix back plate 1 to the table with one M8x12 bolt, flat washer and nut as Fig. A, illustration 2.

Put the saw blade guard 1 against inner side of the same connecting part, align the holes and bolt the saw blade guard 1, connecting part and back plate 1 together with three M8x20 bolts, washers and nuts.

Repeat the same assembly steps on the other side for back plate 2 and saw blade guard 2, as Fig. A, illustration 3 & 4.



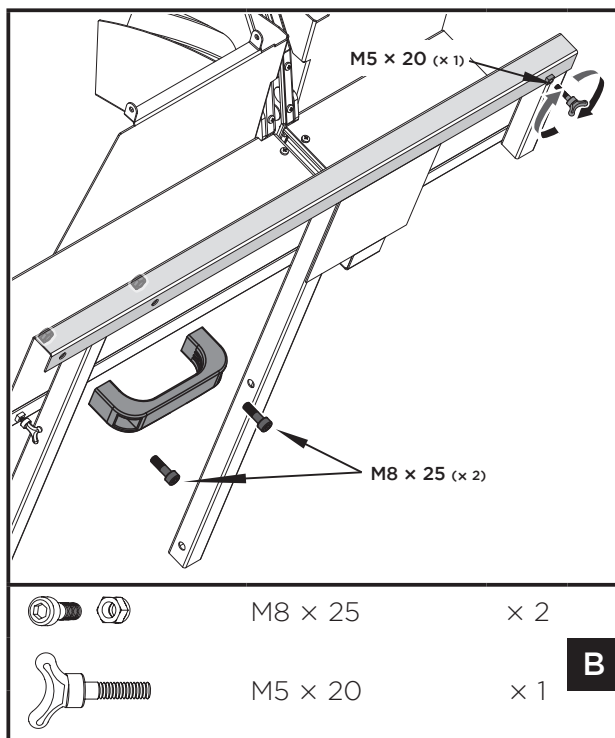
GB

LOG SAW

7

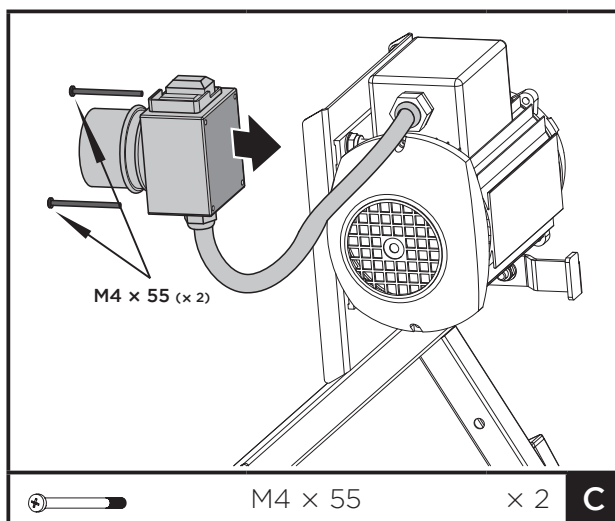
Handle

Attach the handle to the back of the log carriage. Secure it with two M8×25 bolts and lock nuts as Fig. B. Screw the wing bolt M5×20 into the hole at the upper right corner.



ON/OFF Switch

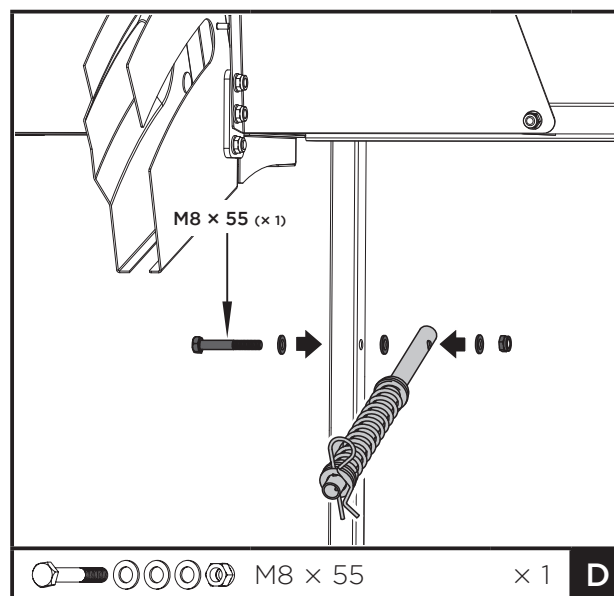
Fix the switch to the motor plate with M4×55 bolts as Fig. C.



Return Spring

Fix one end of the guide pipe with return spring on the left leg with M8×55 bolts, washers and

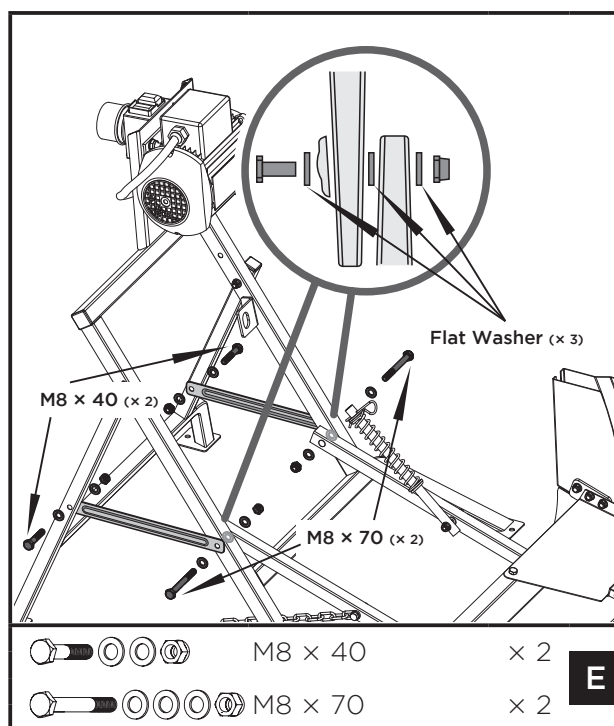
lock nut as Fig. D.

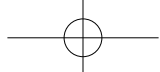


Connecting Pivoting Log Carriage and Base Frame

Lay the pivoting log carriage on the ground with legs inside the base frame, and put one end of the cross brace outside as shown in Fig. E. Fasten them together with M8×40 bolts, washers and lock nuts on both sides.

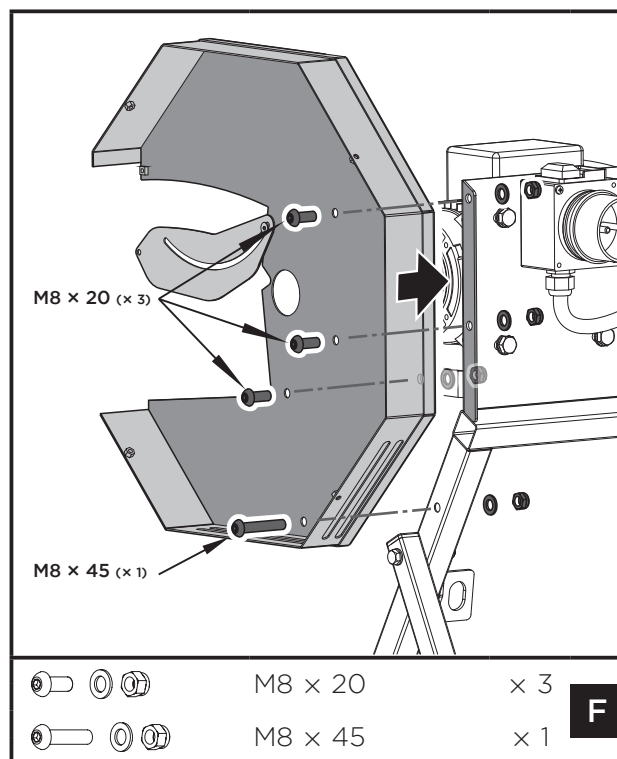
Fix the other end of the cross brace from the inner side of the base frame with M8×70 bolts, washers and lock nuts on both sides.





Inner Saw Blade Cover

Slide the shaft through the centre hole of the inner saw blade cover and align its other holes with those on the motor plate as Fig. F. Secure it with three M8×20 bolts, washers and lock nuts on the upper side and one M8×45 bolt, washer and lock nut on the lower.



Saw Blade

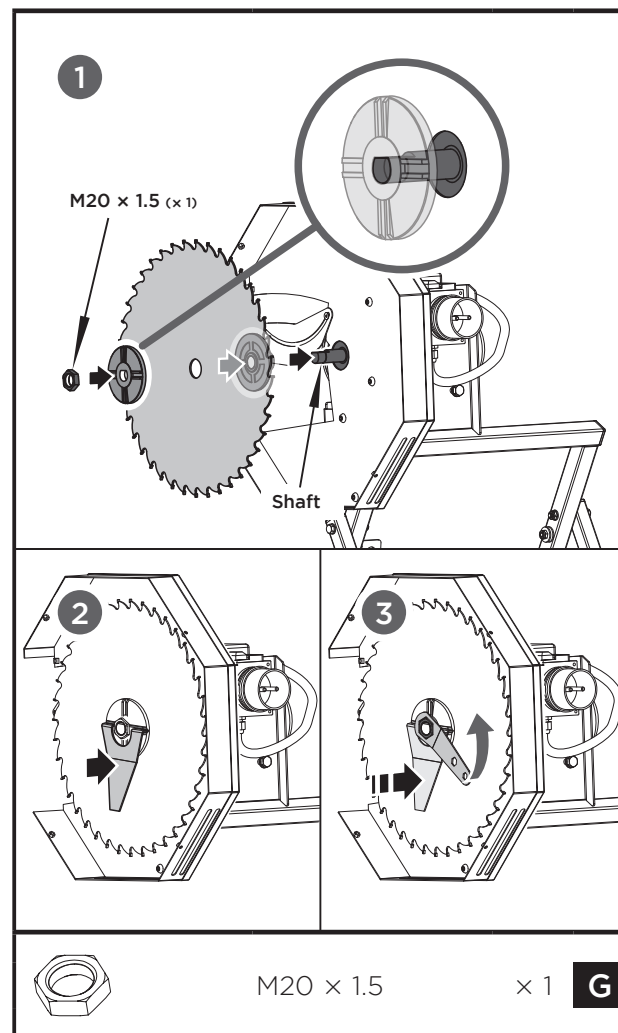
Slide the rear saw blade flange onto the motor shaft. Place the saw blade together with the front clamping flange onto the rear flange and secure it with nut M20×1.5 as Fig. G, illustration 1.



Attention! The arrow on the saw blade has to point in the direction of the operating side!

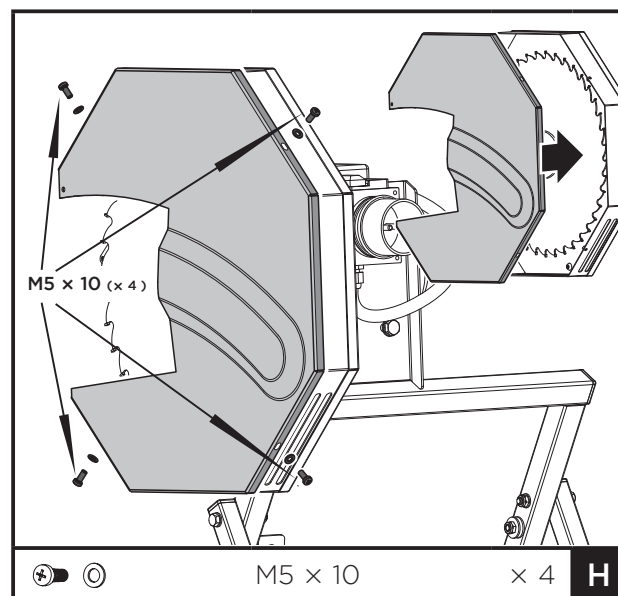
Tighten the nut with the saw blade wrench by holding the front clamping flange with the face wrench in order to stop back as Fig. G, illustration 2 & 3.

Kindly Reminder! Keep the two special wrenches properly.



Outer Saw Blade Cover

Tighten the outer saw blade cover to the inner cover with four M5×10 cross head screws and flat washers as Fig. H



GB

LOG SAW

9

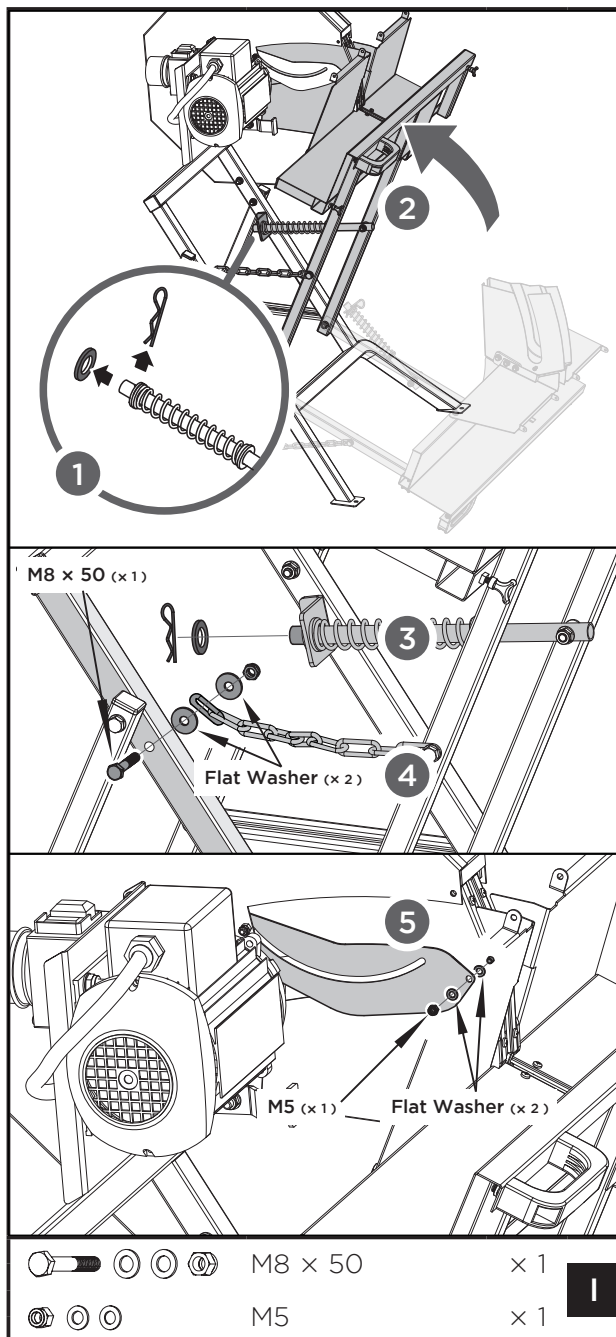
Fixing Return Spring and Chain

Take the cotter pin and washer from the guiding pipe with spring as Fig. I, step 1. Push the log carriage to the base frame until the open end of the guiding pipe is inserted into the angle part at the base frame as Fig. I, step 2. Secure the pipe with the washer and cotter pin as Fig. I, step 3.

Fix the open end of the chain to the base frame at the left side with bolt M8×50, two washers and a nut as Fig. I, step 4.

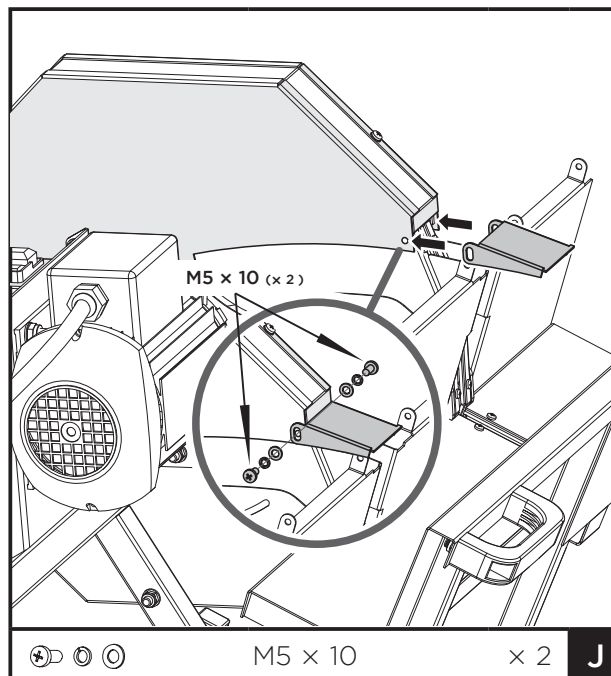
Guard Plate of Inner Saw Blade Cover

Install the guard plate of the inner saw blade cover on the saw blade guard with a M5 nut and two flat washers as Fig. I, step 5.



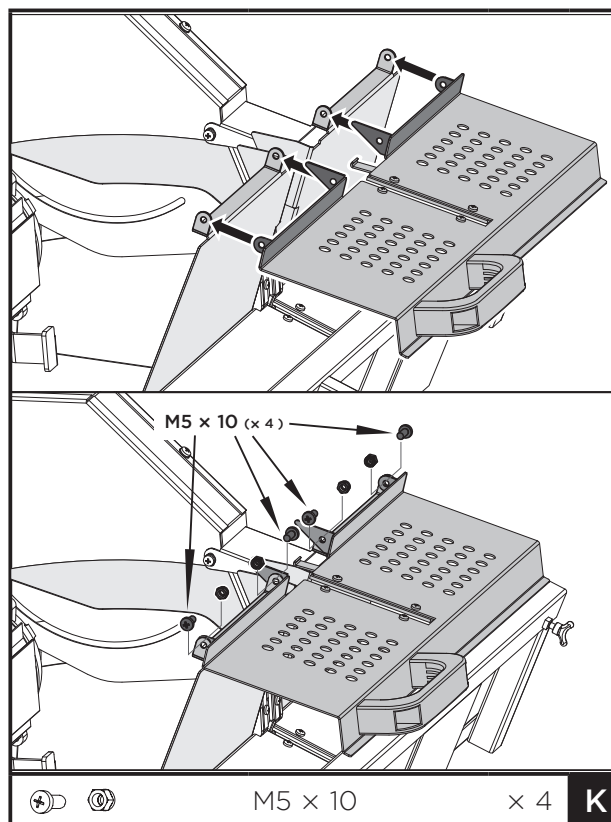
Limit Plate

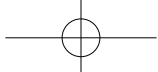
Mount the limit plate and fasten with two M5×10 screws and washers as Fig. J.



Top Guard

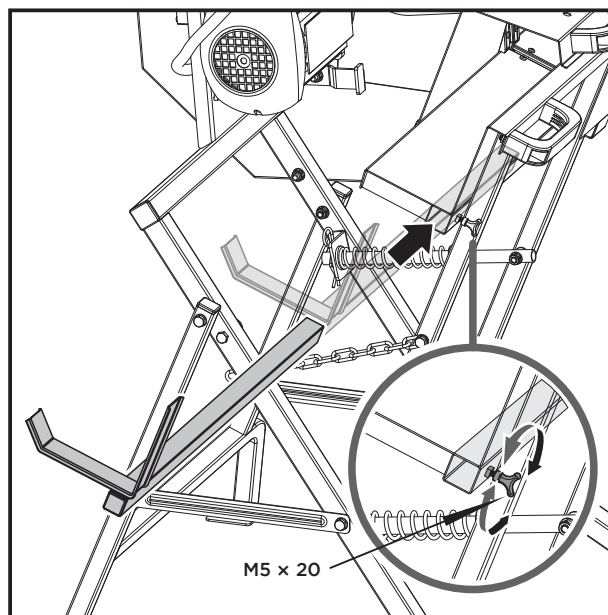
Mount the top guard with four M5×10 bolts and lock nuts as Fig. K.





Log Carriage Extension

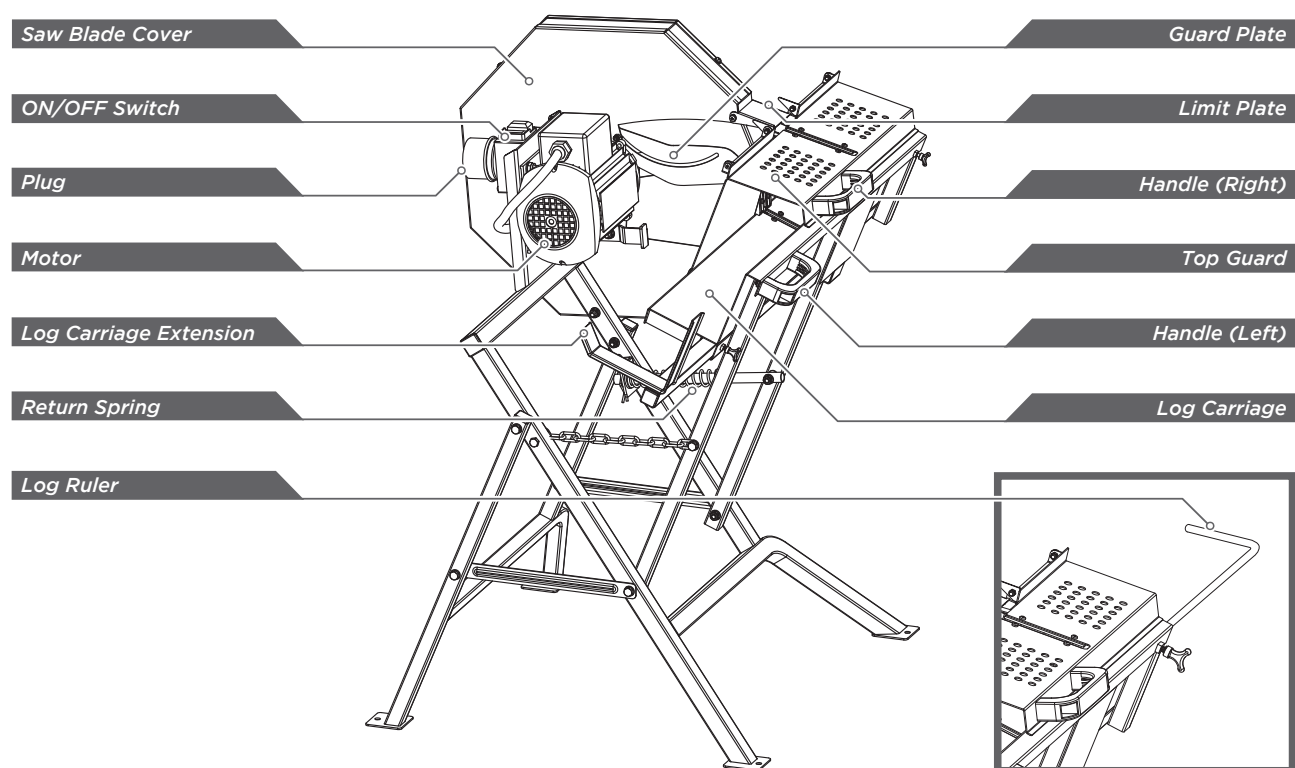
Loosen the wing bolt M5×20 on the back side of the log carriage until the log carriage extension can be inserted into the opening. Slide the log carriage extension into the channel and align it correctly. Then tighten it with the wing bolt.



GB

KNOW YOUR MACHINE

Features and Controls



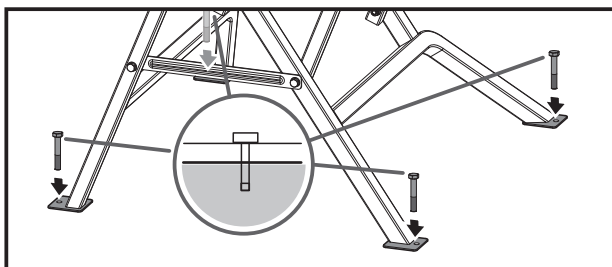
LOG SAW

11

Operation

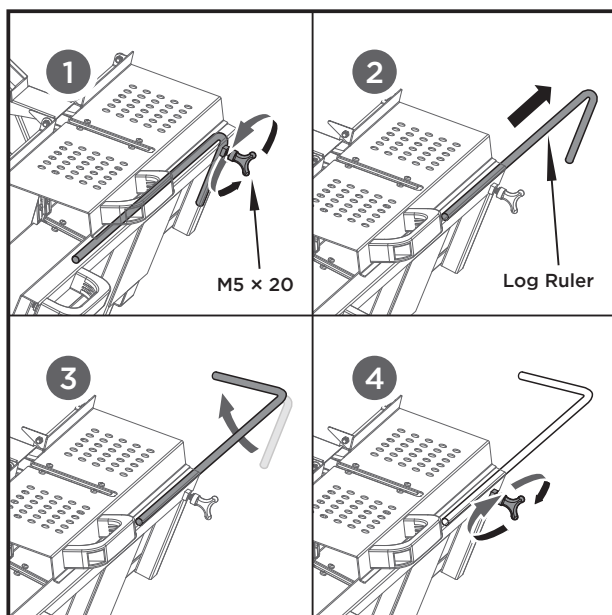
Stake on Level Ground

To secure your log saw, use four bolts or stakes on level ground. Due to varying ground surfaces, these are not included. Choose the right type of bolt or stake for your surface type.



Set the Log Ruler

Loosen the wing bolt M5×20 to allow the log ruler to be pulled out freely. Set the desired length on the scale. Turn it clockwise as shown in illustration 3 and secure it by tightening the wing bolt.



Power Supply and Operation

Take the use of the correct power supply and cables. Put the plug in the socket and turn on the motor switch.

Once motor switch is turned on, the cutting blade starts rotation. Open the top guard, place the log to the cutting position on the log carriage and close the guard. Grip the handle at the left side of log carriage and push it towards the saw blade cover. The movable saw blade

guard will open and show the saw blade. Keep pushing with even strength until the log on the log carriage is cut. Stop pushing and log carriage will retract to its original position. Move the rest of log to the cutting position and continue next cycle until the work is accomplished. To stop the machine, turn the motor switch off until the cutting blade gradually comes to a complete standstill. Put the plug out of the socket and clean the machine with cloth.

Preventive Maintenance

Inspect the general condition of the log saw. Check for loose screws, misalignment or binding of moving parts, cracked or broken parts, and any other condition that may affect its safe operation. Remove all debris from the log saw with a soft brush, vacuum or compressed air. Make maintenance a regular part of daily operation.

- Check
- Nuts, bolts, and fittings – make sure all are tight and secure.
- Cutting blade conditions – sharpen or replace a dull or damaged blade.

Free Blocked Log

If a blockage is likely to occur. Switch off the device immediately.

- Wait until the saw comes to a stop.
- Pull out power plug.
- Remove the blocked log from the machine carefully.

Sharpening the Saw Blade

The saw blade can be sharpened.

This saw-blade can be sharpened several times without removing it from the machine. Use a fine-cut square-blade file of 8-12" for sharpening.

During manual sharpening, only file the front rake of the tooth over a distance of about 5-7mm.

Always keep the original shape of the tooth.

Do not make sharp notches at the root of the tooth with the file.

Always clean the blade-clamps carefully.

Check the blade carefully to ensure you are never sawing with a cracked blade.



MAINTENANCE



Warning! Prior to any adjustment, maintenance or service work disconnect the mains power plug!

General Maintenance Measures

Keep all safety devices, air vents and the motor housing free of dirt and dust as far as possible. Wipe the equipment with a clean cloth or blow it with compressed air at low pressure.

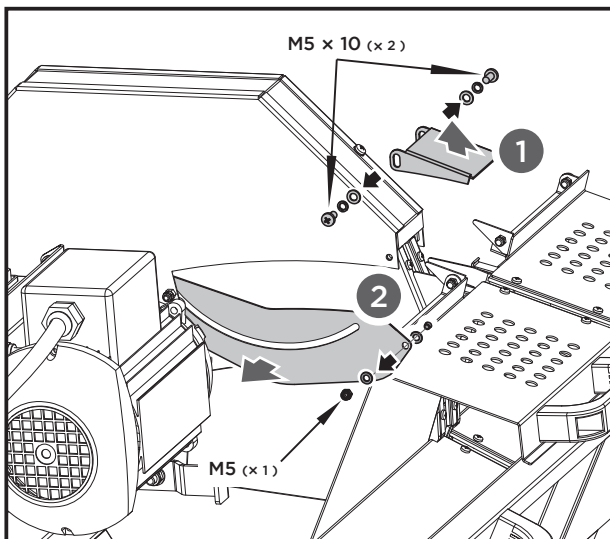
We recommend that you clean the device immediately each time you have finished using it.

Clean the equipment regularly with a damp cloth and some soft soap. Do not use cleaning agents or solvents; these could attack the plastic parts of the equipment. Ensure that no water can seep into the device. The ingress of water into an electric tool increases the risk of an electric shock.

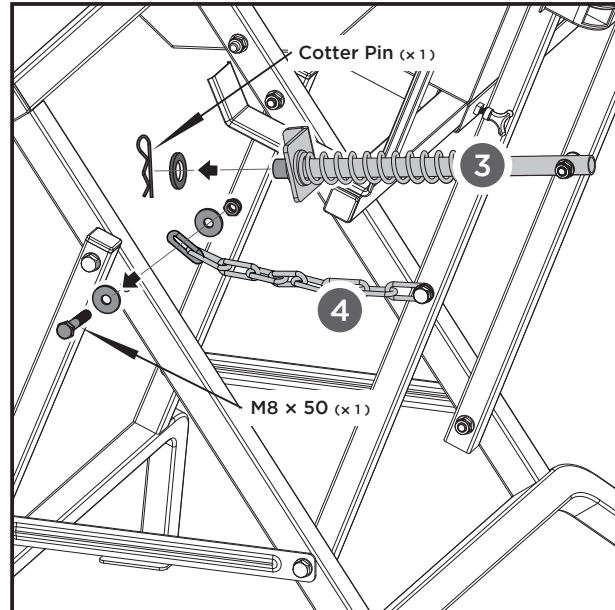
In order to extend the service life of the tool, oil the rotary parts once monthly. Do not oil the motor.

Saw Blade Change

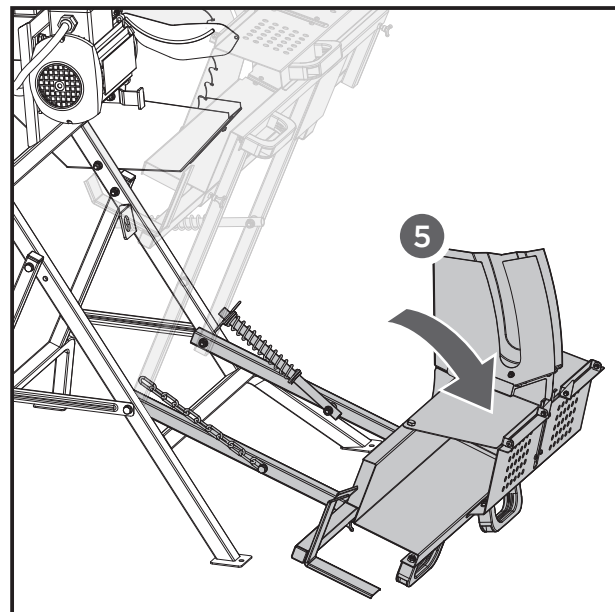
1. Disassemble the limit plate by loosening the M5x10 screws, spring washers and flat washers.
2. Remove the M5 nut and flat washers from the guard plate.



3. Pull the cotter pin and washer from the return guiding pipe.
4. Remove the M8x50 bolt, washers and nut fixing the chain.



5. Slowly lower the log carriage towards the ground.

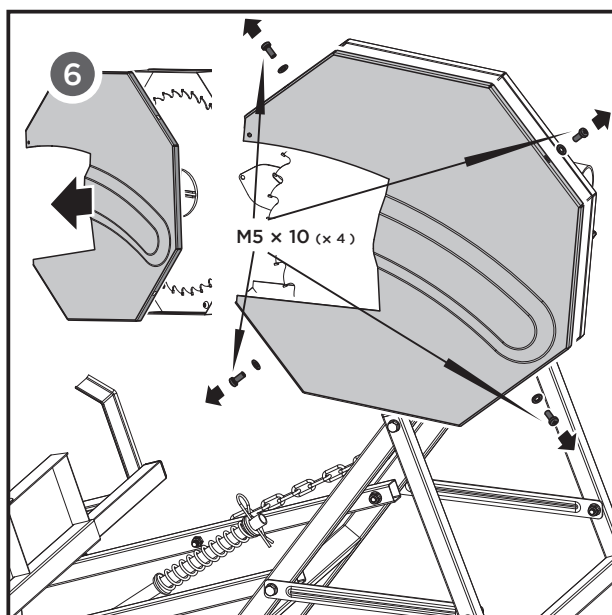


GB

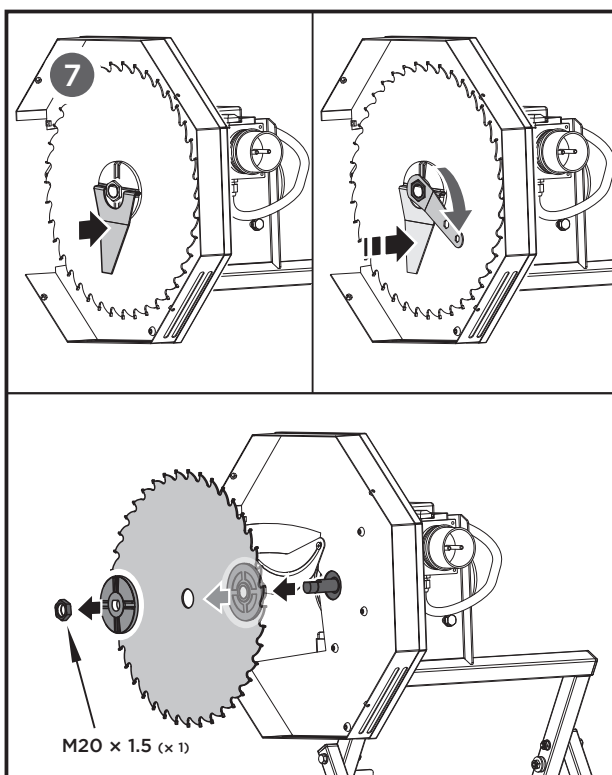
LOG SAW

13

6. Remove the four M5×10 screws and washers from the saw blade guard and also the outer saw blade cover.



7. Disassemble the nut M20×1.5 and the front clamping flange. Take down the old saw blade.



STORAGE

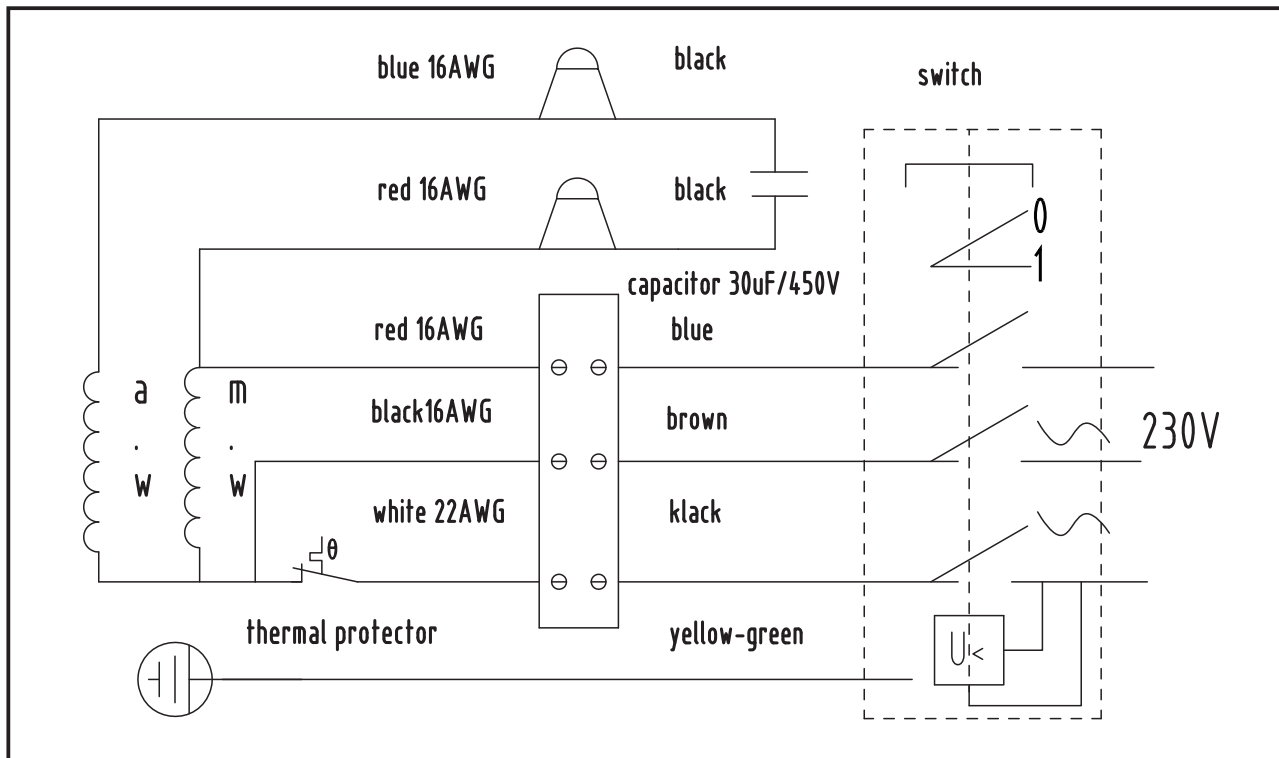
Store unused equipment in a dry, locked place out of the reach of children. Before a longer period of storage carry out the following to extend the saw service life and ensure an easy operating.

- Thoroughly clean the device.
- Treat all movable parts with an environmentally friendly oil.



WIRING DIAGRAM

GB



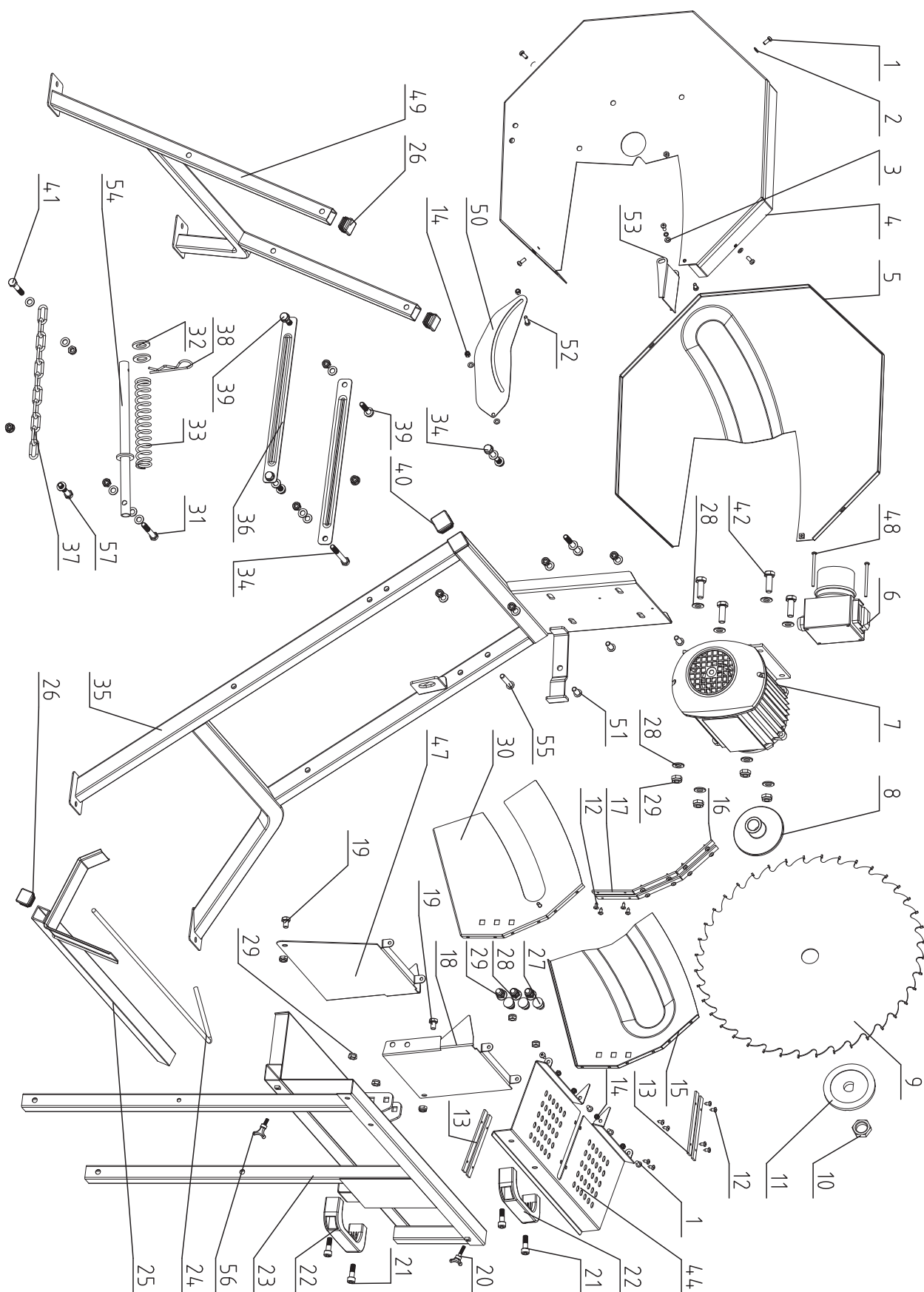
TROUBLE SHOOTING

Problem	Cause	Remedy
Saw blade gets loose after turning off the motor	Fastening nut tightened insufficiently	Tighten fastening nut right-hand thread
Motor does not start	1. Failure mains fuse 2. Extension cable defect 3. Connections of the motor or switch defect 4. Motor or connections defect	1. Check mains fuse 2. Exchange extension cable 3. Have it checked by an electrician 4. Have it checked by an electrician
Wrong direction of motor rotation	Capacitor defect	Have it checked by an electrician
Motor unable to run- the fuse is tripped	1. Cross section of the extension cable insufficient 2. Overload by dull saw blade	1. See “WIRING DIAGRAM” in the operating manual 2. Exchange saw blade
Burns on the cutting surface	1. Dull saw blade 2. Wrong saw blade	1. Insert a sharpened saw blade 2. Exchange saw blade

LOG SAW

15

PARTS SCHEDULE





Parts List

GB

No.	Description	Q'ty
1	Screw M5×12	10
2	Washer 5	6
3	Flat Washer 5	8
4	Inner Saw Blade Cover	1
5	Outer Saw Blade Cover	1
6	Switch	1
7	Motor	1
8	Rear Saw Blade Flange	1
9	Saw Blade	1
10	Nut M20×1.5	1
11	Front Clamping Flange	1
12	Screw ST4.2×9.5	20
13	Plastic Bar 3	4
14	Locknut M5	4
15	Saw Blade Guard 1	1
16	Plastic Bar 1	4
17	Plastic Bar 2	2
18	Back Plate 1	1
19	Bolt M8×12	4
20	Wing Screw M5×20	1
21	Screw M8×25	4
22	Handle	2
23	Pivoting Log Carriage	1
24	Log Ruler	1
25	Log Carriage Extension	1
26	Plug for 25×25 Square Pipe	3
27	Bolt M8×20	6

No.	Description	Q'ty
28	Washer 8	43
29	Locknut M8	28
30	Saw Blade Guard 2	1
31	Bolt M8×55	1
32	Flat Washer 16	2
33	Return Spring	1
34	Bolt M8×70	4
35	Base Frame 2	1
36	Cross Brace	2
37	Locking Chain	1
38	Cotter Pin 3	1
39	Bolt M8×40	2
40	Plug for 30×30 Square Pipe	1
41	Bolt M8×50	1
42	Bolt M8×30	4
44	Top Guard	1
47	Back Plate 2	1
48	Screw M4×58	2
49	Base Frame 1	1
50	Movable Guard Plate	1
51	Screw M8×20	3
52	Screw M5×20	1
53	Limit Part	1
54	Guide Pipe	1
55	Screw M8×45	1
56	Wing Screw M5×12	1
57	Bolt M8×45	1

